

NLC NATIONAL
LABOR
COLLEGE



NLC NATIONAL
LABOR
COLLEGE

10000 New Hampshire Avenue
Silver Spring, Maryland 20903
301-431-6400 • 1-800-462-4237
www.nlc.edu

NATIONAL WORKERS  MEMORIAL
MOURN FOR THE DEAD FIGHT FOR THE LIVING

BACKGROUND

We all know stories about someone lost to unsafe workplaces. Sometimes it makes the news, but most of the time the more than 5,000 workers who lose their lives on the job every year do so silently. But now it is their time. We must remember the dead and fight for the living, Mother Jones said, and today we translate that to creating a fitting memorial to the victims of unsafe workplaces.

NATIONAL LABOR COLLEGE

The National Labor College will proudly serve as the home of the National Workers Memorial, which we plan to construct by spring of 2009. The memorial is the only national monument for those killed on the job. Here, in this center for union learning, we can strengthen unionists who can fight for the living so that tomorrow's workplaces are safer and healthier.

GRANITE BENCHES

Placed throughout the monument will be numerous granite benches, each engraved with a special memorial message from supporting unions and organizations. We hope you will memorialize those who have died because of workplace injury or illness. For a \$10,000 contribution, your lost members can be remembered in a lasting place.

Most of the monument will be devoted to simple brick pavers, which will be replaced over time, one-by-one with bricks engraved with the names of fallen workers. These may be sponsored at an individual level or within the reach of a few friends passing the hat on the shop floor. Slate pavers will honor events and places where workers have died.

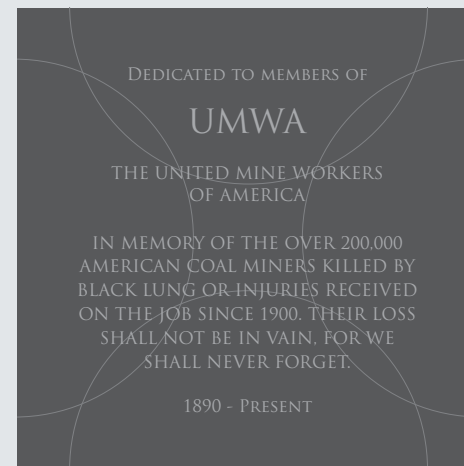
LOCATION

This brochure features the artist's rendering of the project which is located in the center of the college campus. The memorial is designed to provide a place for students and visitors to rest and reflect, but also as a place for the daily activities of a busy campus to occur. In this way the memorial is woven into the life of the campus and into the students' time here.

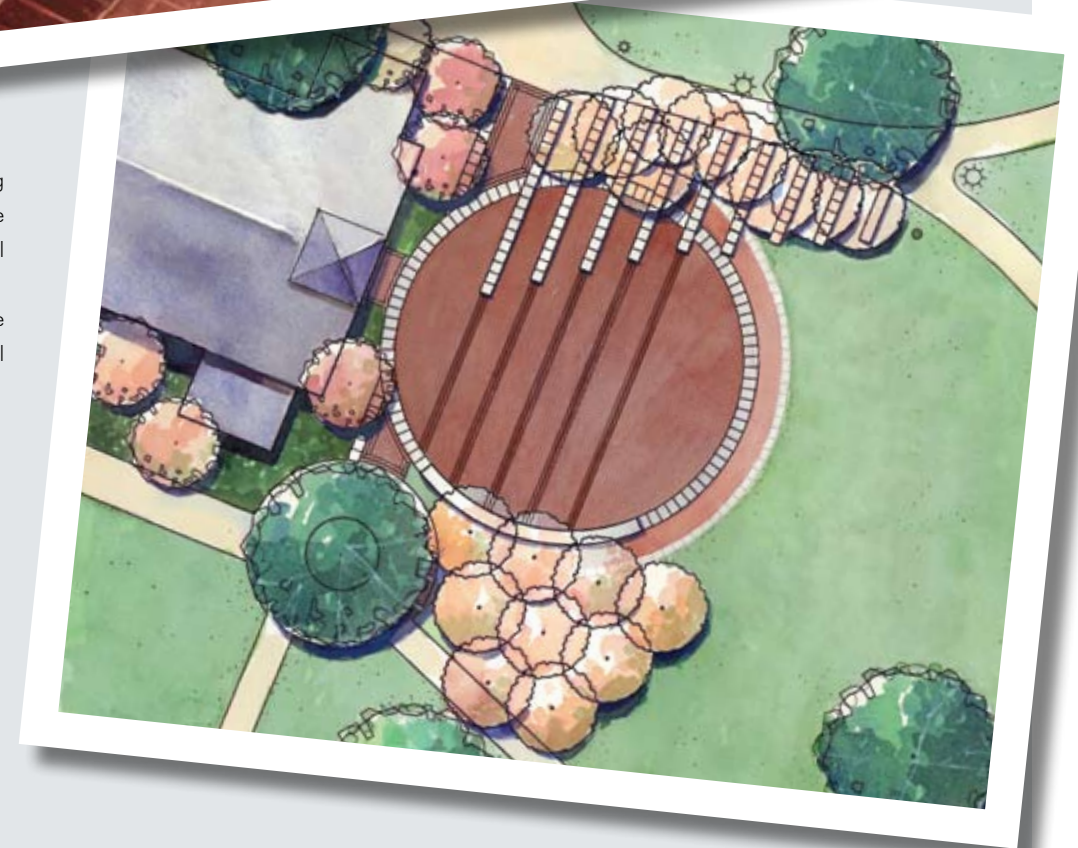
We hope you will support this important project. For more information or to receive an order form please contact:

National Labor College
Office of the President
(301) 431-5406 or email
workersmemorial@nlc.edu

SAMPLE ENGRAVING



Above: Artist's rendering of granite benches at the National Workers Memorial



Right: Aerial view of the National Workers Memorial