

# Searching the IMAW Publications in GSU Library's Digital Collections

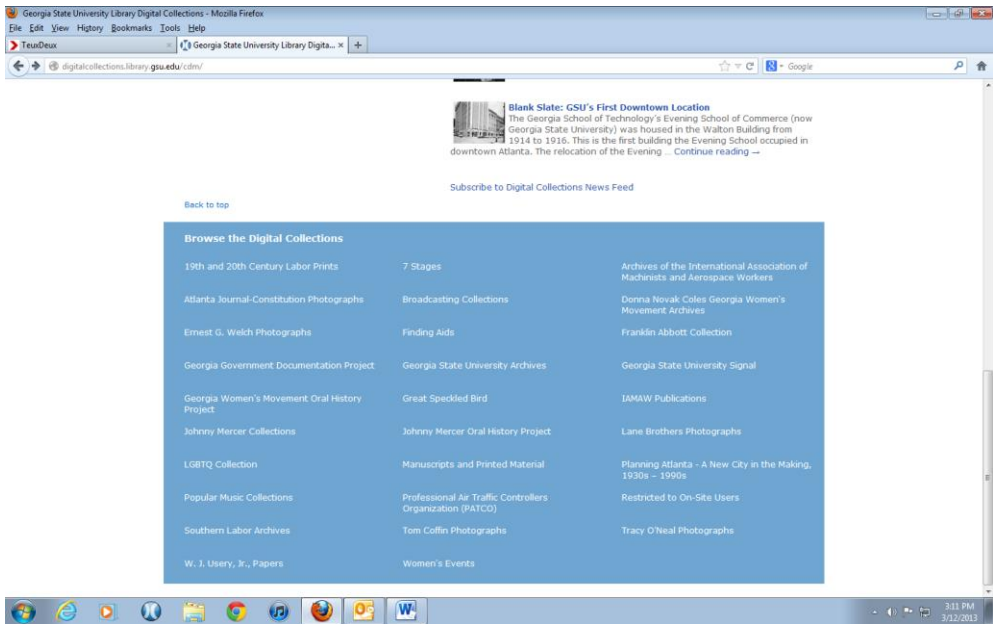


The following tips will help you search and view content within the IMAW Publications, part of GSU Library's Digital Collections.

- 1. Start your search at Digital Collections <http://digitalcollections.library.gsu.edu/cdm/>



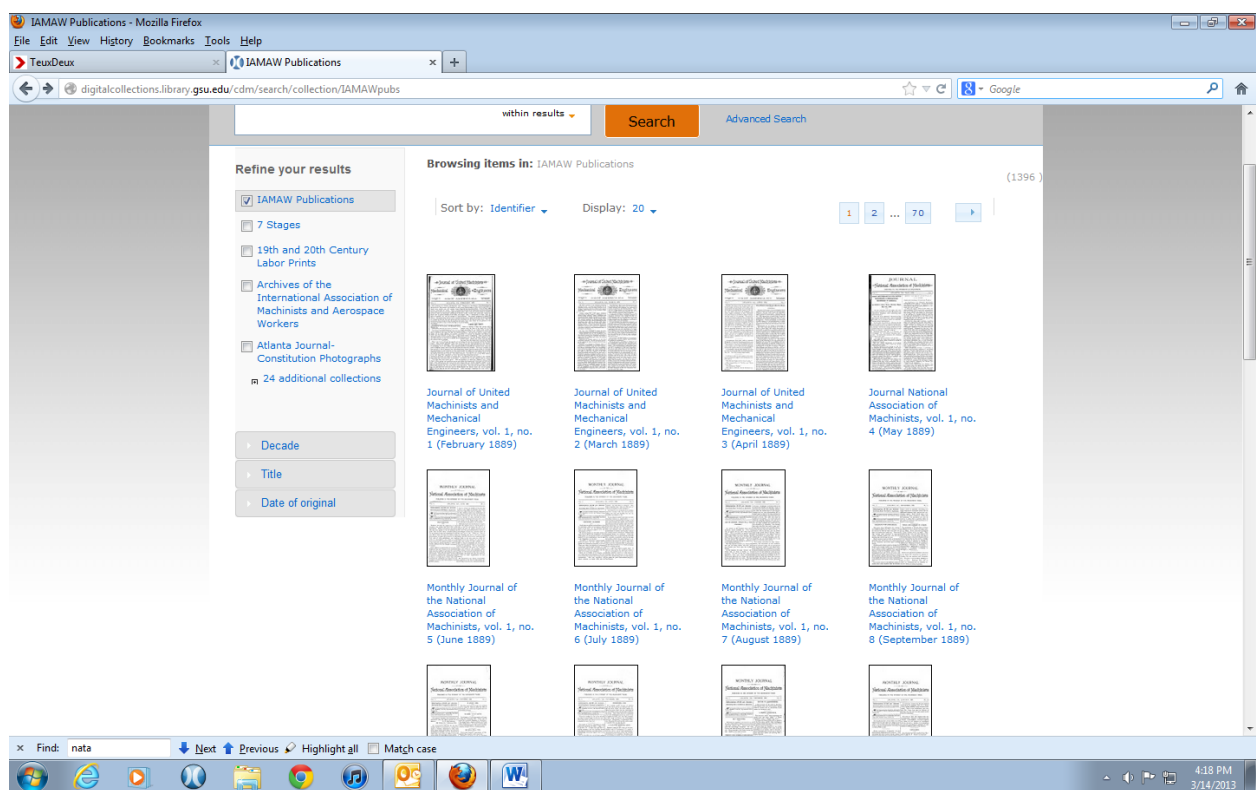
- 2. Choose the IMAW Publications in one of two ways
  - a. Click “Browse Collections” on the bar along the top of the page and then choose the collection you’d like to search
  - b. Scroll to the bottom of the page, which lists all collections, and choose the collection you’d like to search



3. From the collections' landing page you will have the option to browse issues in chronological order or use particular terms in a search within the text of the digitized periodicals.
- a. Keep search terms simple, but use two or three for best results. Try to use specific names of people, cities, organizations, companies, etc.



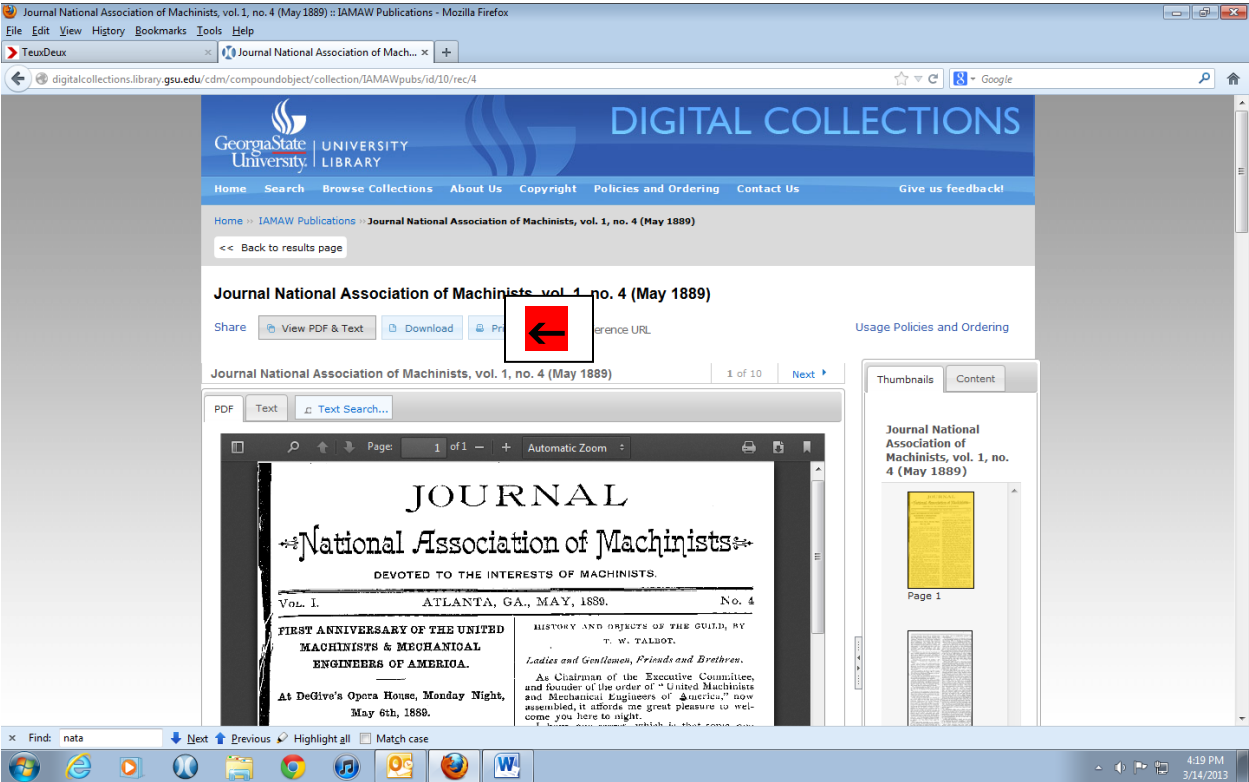
4. Once you have a list of results, you will have to open each one to see if the results are relevant.
- a. The search terms will greatly narrow the number of hits you get but will not guarantee to only display results for your topic.
  - b. Unfortunately, proximity searching is not a possibility so one search term might end up on the front page of an issue and another on the back.



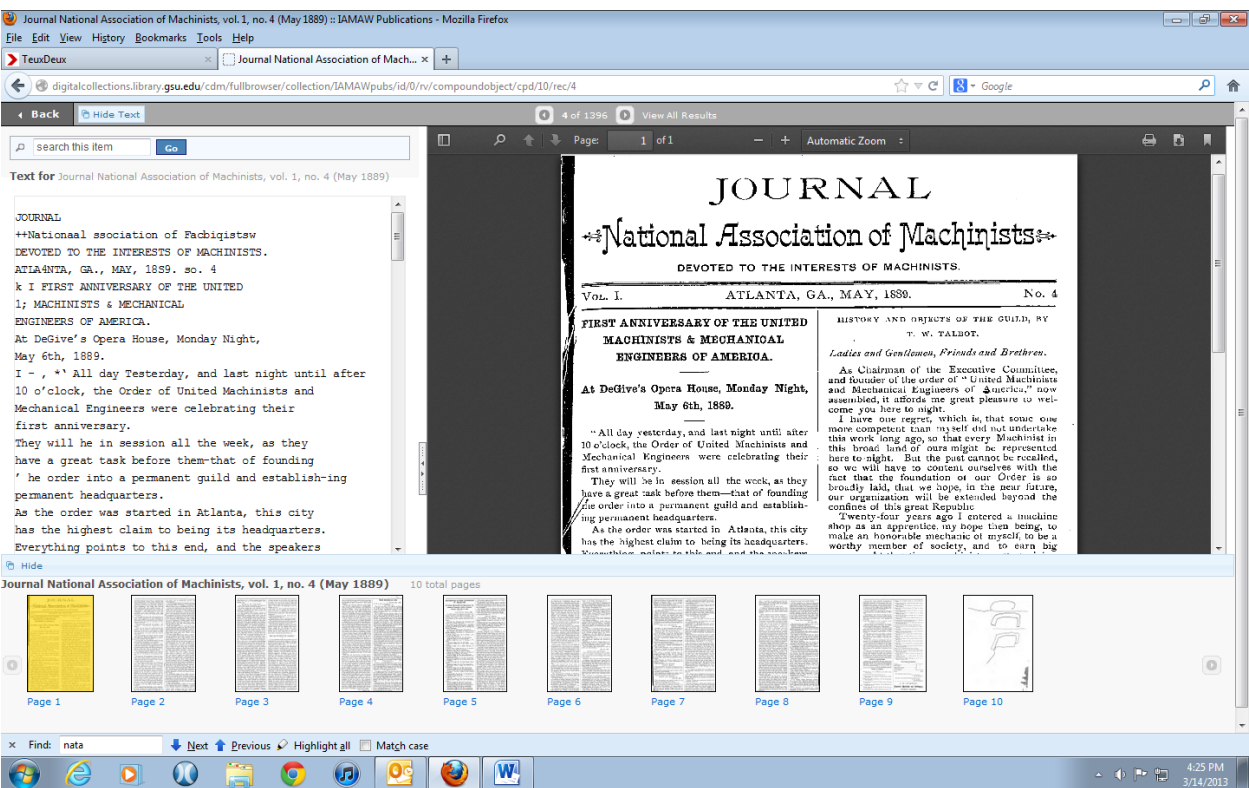
5. When you have found an issue you'd like to view, click on it to pull up the issue-level page.

6. Identify the two buttons that say “View PDF and Text” and “Download”; they’re located just under the title and date of the issue. (Example A.)
- a. If you press “View PDF and Text” you’ll be provided with a split screen with easily searchable text on the left and the .pdf on the right. However, you can only see one page of the issue at a time. (See Example B below)
  - b. If you press “Download”, you’ll open a .pdf of the complete issue (using Adobe reader) with the option to save it to your computer (I’d recommend giving it a different title if you do this). All versions of Adobe reader allow you to search content – some have a search bar, or you can click on Edit>Find (from the menu along the top of the Adobe document) and type in your search term. You’ll be taken to the article that includes the search term. (See example C-1 through C-4 below)

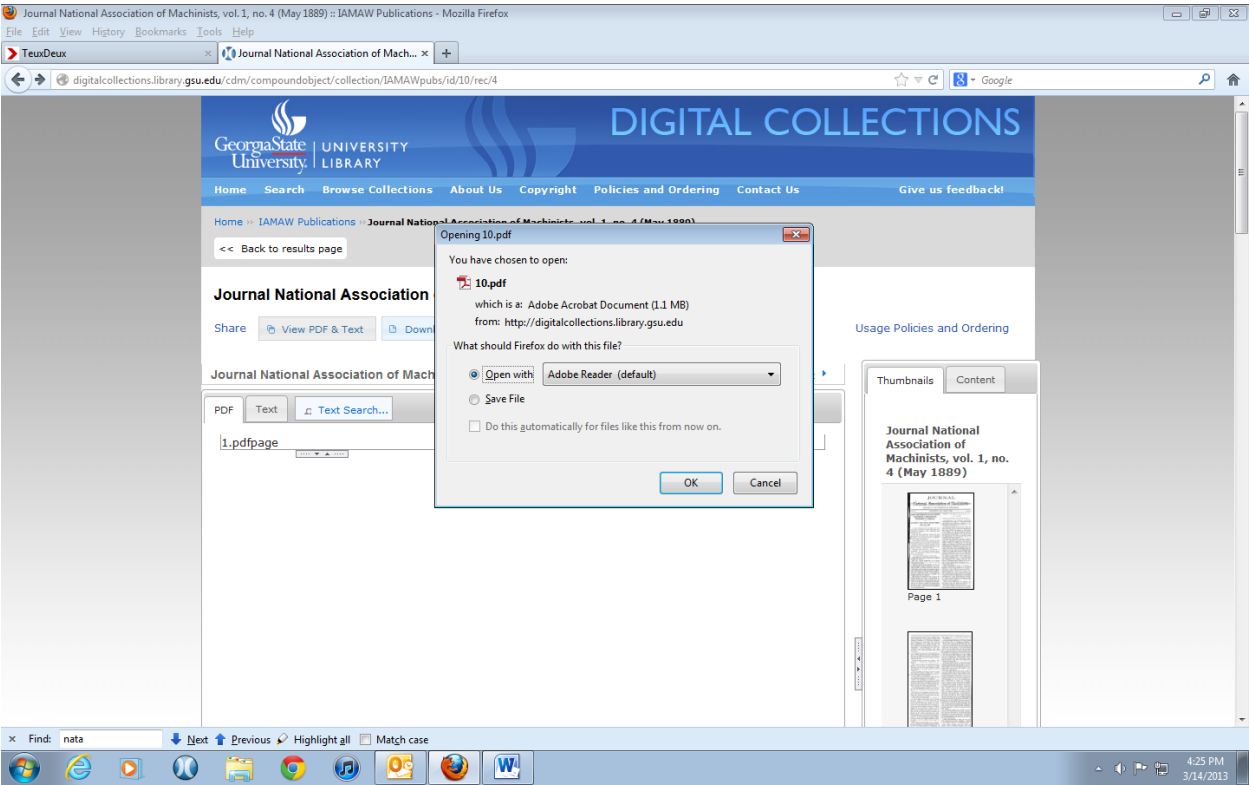
Example A.



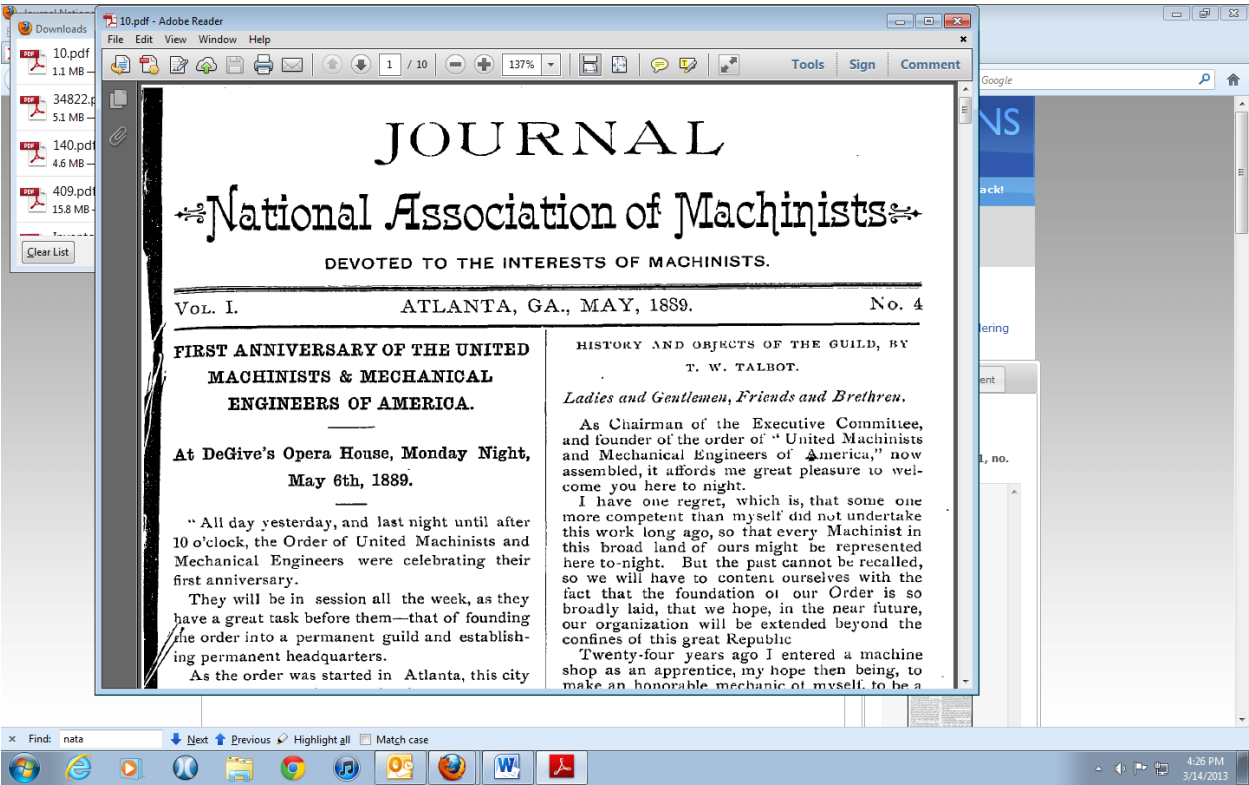
Example B.



Example C-1.

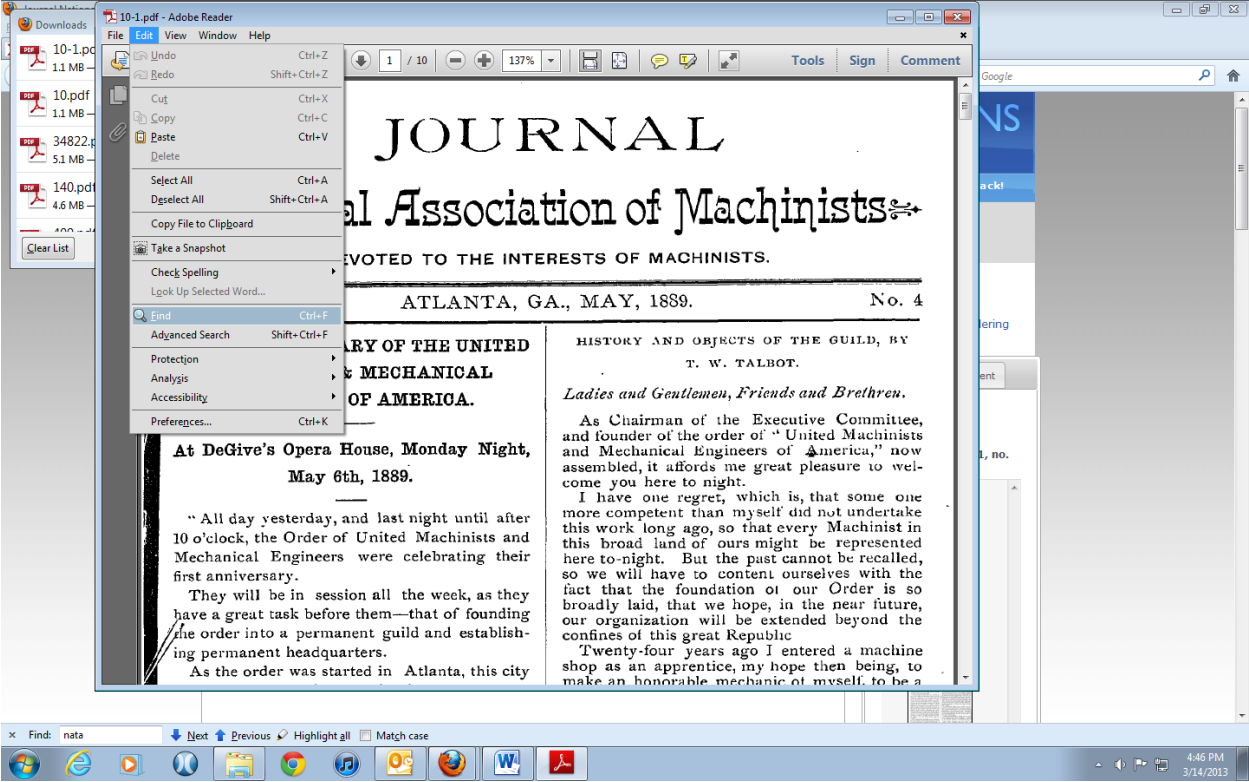


Example C-2.





Example C-3.



Example C-4.

